

BIM FOR EVERYONE



BIM FOR EVERYONE USING BIMUP AND SKETCHUP AS A BIM PLATFORM

BiMUp Limited | Kingfisher House | 21-23 Elmfield Road | Bromley | BR1 1LT

T/F: +44 (0) 20 8852 9797

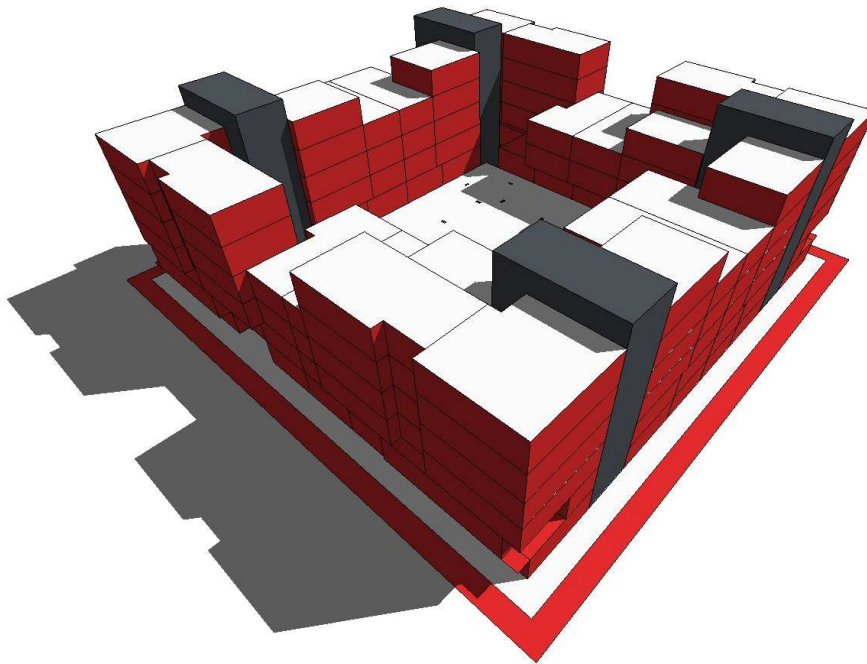
W: www.BiMUp.co.uk | **E:** info@BiMUp.co.uk

Bill of Quantities: Area - Flats

Job Number: BiMUp Reporting

File in Use: BiMUp5D-Area-FesibilityStudy-Residential_01

Document generated on: Tuesday, 16 Jun 2015, 16:03:36 time zone: GMT Summer Time



Description	Count	Flat Area (m2)	Flat Area Total (m2)
1b2p Flat Type A	16	51.02	816.40
1b2p Flat Type B	6	51.02	306.13
2b4p Flat Type A	20	71.05	1,421.00
2b4p Flat Type B	16	68.20	1,091.24
2b4p Flat Type C	4	60.12	240.48
2b4p Flat Type D	16	68.15	1,090.40
2b4p Flat Type E	1	66.00	66.00
3b5p Flat Type A - Maisonette	11	100.50	1,105.48
3b5p Flat Type B - Maisonette	4	117.25	468.99
3b5p Flat Type C - Wheelchair	4	94.88	379.53
	---		---
	98		6,985.64