

# BIM FOR EVERYONE



## BIM FOR EVERYONE USING BIMUP AND SKETCHUP AS A BIM PLATFORM

BiMUp Limited | Kingfisher House | 21-23 Elmfield Road | Bromley | BR1 1LT

T/F: +44 (0) 20 8852 9797

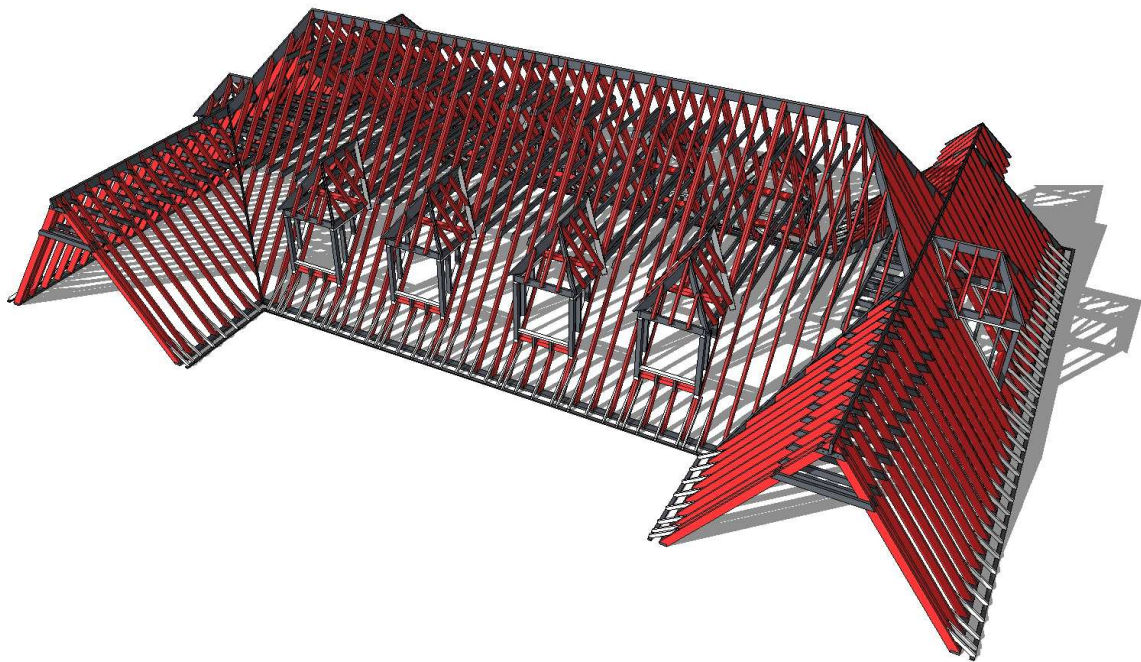
W: [www.BiMUp.co.uk](http://www.BiMUp.co.uk) | E: [info@BiMUp.co.uk](mailto:info@BiMUp.co.uk)

**Bill of Quantities:** Length

**Job Number:** BiMUp Reporting

**File in Use:** BiMUp5D-Length-TimberRoof\_02

**Document generated on:** Tuesday, 16 Jun 2015, 12:47:43 time zone: GMT Summer Time



Description	Count	Width (mm)	Height (mm)	Length (m)	Length Total (m)
Brace	4	50	100	1.383	5.53
Brace	8	50	125	0.586	4.69
Dormer Corner Post	24	100	100	1.405	33.72
Dormer Plate	12	50	100	1.200	14.40
Dormer Plate	12	50	150	1.300	15.60
Dormer Plate	24	50	150	1.272	30.53
Dormer Plate	24	72	100	1.863	44.72
Dormer Plateau	24	50	100	1.159	27.82
Dormer Rafter Hip	24	50	225	1.511	36.26
Dormer Rafter Jack	48	50	100	0.747	35.88
Dormer Rafter Jack	24	50	100	0.830	19.93
Dormer Rafter Jack	12	50	100	1.270	15.24
Dormer Rafter Jack	48	50	100	1.329	63.79
Dormer Ridge Board	12	50	225	1.402	16.82

Description	Count	Width (mm)	Height (mm)	Length (m)	Length Total (m)
Dormer Stud	24	50	100	0.449	10.79
Dormer Stud	24	50	100	0.980	23.53
Dormer Stud	24	50	100	0.288	6.92
Dormer Trimmer	48	75	150	1.200	57.60
Dormer Valley Board	22	25	115	1.750	38.51
Joist	46	50	125	4.932	226.89
Joist	24	50	125	1.727	41.45
Rafter	4	50	150	0.536	2.14
Rafter	4	50	150	1.201	4.80
Rafter	4	50	150	1.865	7.46
Rafter	4	50	150	2.530	10.12
Rafter	2	50	150	2.779	5.56
Rafter	80	50	150	4.287	342.98
Rafter	56	50	150	7.009	392.51
Rafter	4	50	150	0.965	3.86
Rafter	4	50	150	1.335	5.34
Rafter	16	50	150	7.009	112.15
Rafter Hip	4	50	225	3.343	13.37
Rafter Hip	4	50	225	5.022	20.09
Rafter Jack	8	50	150	1.047	8.38
Rafter Jack	4	50	150	1.074	4.30
Rafter Jack	8	50	150	1.712	13.69
Rafter Jack	4	50	150	1.739	6.95
Rafter Jack	4	50	150	1.739	6.96
Rafter Jack	8	50	150	2.376	19.01
Rafter Jack	4	50	150	2.403	9.61
Rafter Jack	4	50	150	3.041	12.16
Rafter Jack	4	50	150	3.068	12.27
Rafter Jack	4	50	150	3.068	12.27
Rafter Jack	4	50	150	3.190	12.76
Rafter Jack	4	50	150	3.273	13.09
Rafter Jack	4	50	150	3.706	14.82
Rafter Jack	4	50	150	3.733	14.93
Rafter Jack	4	50	150	4.255	17.02
Rafter Jack	4	50	150	4.397	17.59
Rafter Jack	4	50	150	5.644	22.57
Rafter Jack	4	50	150	6.308	25.23
Rafter Jack	4	50	150	6.973	27.89
Rafter Jack	4	50	150	3.706	14.82
Rafter Valley	4	50	225	5.089	20.35
Ridge Board	2	50	225	6.696	13.39
Ridge Board	2	50	225	11.811	23.62
Sprocket	200	38	75	1.142	228.39
Tie	84	25	100	0.490	41.14
Tie	82	50	125	1.656	135.82
Wall Plate	2	50	150	2.922	5.84
Wall Plate	2	50	150	2.997	5.99
Wall Plate	2	50	150	5.210	10.42
Wall Plate	4	50	150	5.669	22.68
Wall Plate	2	50	150	14.105	28.21

Description	Count	Width (mm)	Height (mm)	Length (m)	Length Total (m)
Wall Plate Sprocket	2	25	70	2.617	5.23
Wall Plate Sprocket	2	25	70	3.067	6.13
Wall Plate Sprocket	4	25	70	5.444	21.78
Wall Plate Sprocket	2	25	70	5.520	11.04
Wall Plate Sprocket	2	25	70	14.480	28.96
	----				
Total	1,188				