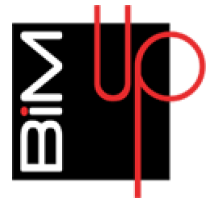


# BIM FOR EVERYONE



## BIM FOR EVERYONE USING BIMUP AND SKETCHUP AS A BIM PLATFORM

**BiMUp Limited | Kingfisher House | 21-23 Elmfield Road | Bromley | BR1 1LT**

**T/F:** +44 (0) 20 8852 9797

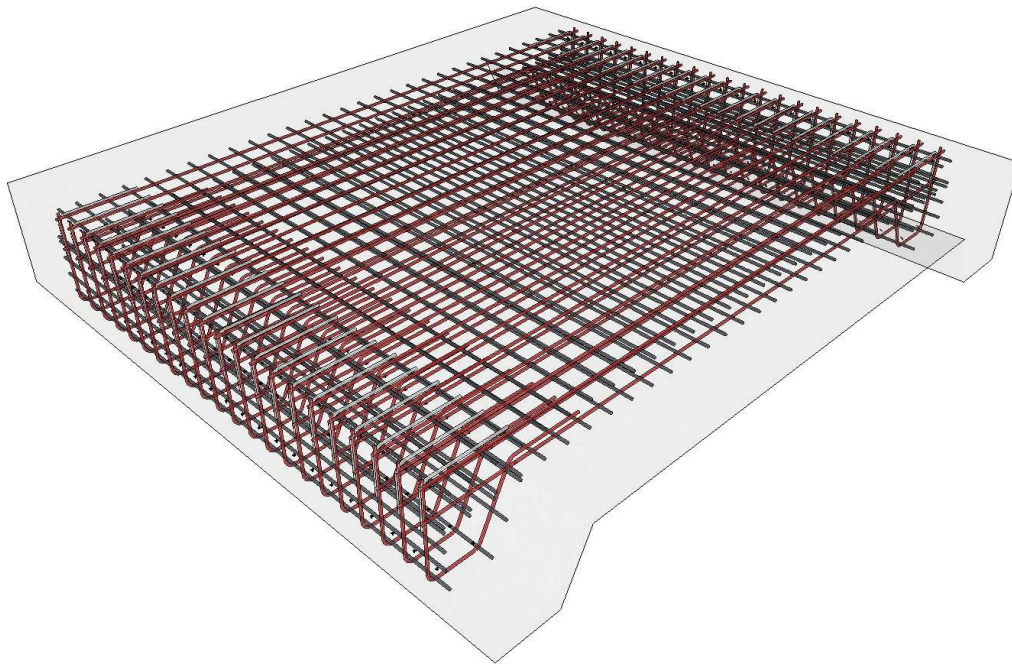
**W:** www.BiMUp.co.uk | **E:** info@BiMUp.co.uk

**Bill of Quantities:** Length and Weight - Reinforcement

**Job Number:** BiMUp Reporting

**File in Use:** BiMUp5D-Length-Weight-TypicalGroundSlab-Reinforcement\_01

**Document generated on:** Tuesday, 16 Jun 2015, 12:18:28 time zone: GMT Summer Time



Description	Count	Bar Size (mm)	Weight (kg/m)	Length (m)	Length Total (m)	Length x Weight	Weight Total (kg)
Bar-Beam 01	44	20	2.47	2.37	104.38	5.86	257.81
Bar-Beam 02	18	20	2.47	4.50	81.00	11.12	200.07
Bar-L	44	20	2.47	1.00	44.02	2.47	108.73
Bar-Mat 01	44	20	2.47	5.91	260.04	14.60	642.30
Bar-Mat 02	60	20	2.47	4.50	270.00	11.12	666.90
	----				----		----
Total	210				759.44		1,875.81