

BIM FOR EVERYONE



BIM FOR EVERYONE USING BIMUP AND SKETCHUP AS A BIM PLATFORM

BiMUp Limited | Kingfisher House | 21-23 Elmfield Road | Bromley | BR1 1LT

T/F: +44 (0) 20 8852 9797

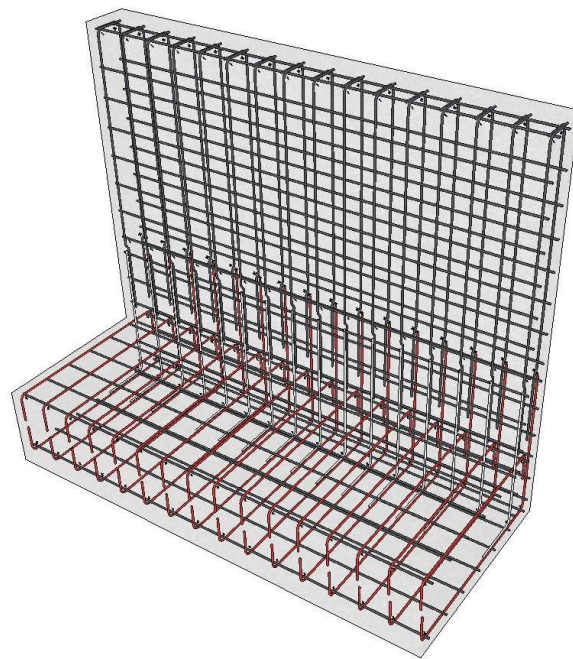
W: www.BiMUp.co.uk | **E:** info@BiMUp.co.uk

Bill of Quantities: Length and Weight - Reinforcement

Job Number: BiMUp Reporting

File in Use: BiMUp5D-Length-Weight-TypicalRetainingWall-Reinforcement_01

Document generated on: Tuesday, 16 Jun 2015, 12:28:07 time zone: GMT Summer Time



Description	Count	Bar Size (mm)	Weight (kg/m)	Length (m)	Length Total (m)	Length x Weight	Weight Total (kg)
Bar-Base 01	16	12	0.89	2.47	39.51	2.19	35.08
Bar-Base 02	16	12	0.89	1.62	25.95	1.44	23.04
Bar-Mat 02	42	12	0.89	3.06	128.57	2.72	114.17
Bar-Steem 01	32	12	0.89	2.20	70.49	1.96	62.59
Bar-Steem 02	16	12	0.89	1.32	21.16	1.17	18.79
	----				----		----
Total	122				285.67		253.68