

BIM FOR EVERYONE



BIM FOR EVERYONE USING BIMUP AND SKETCHUP AS A BIM PLATFORM

BiMUp Limited | Kingfisher House | 21-23 Elmfield Road | Bromley | BR1 1LT

T/F: +44 (0) 20 8852 9797

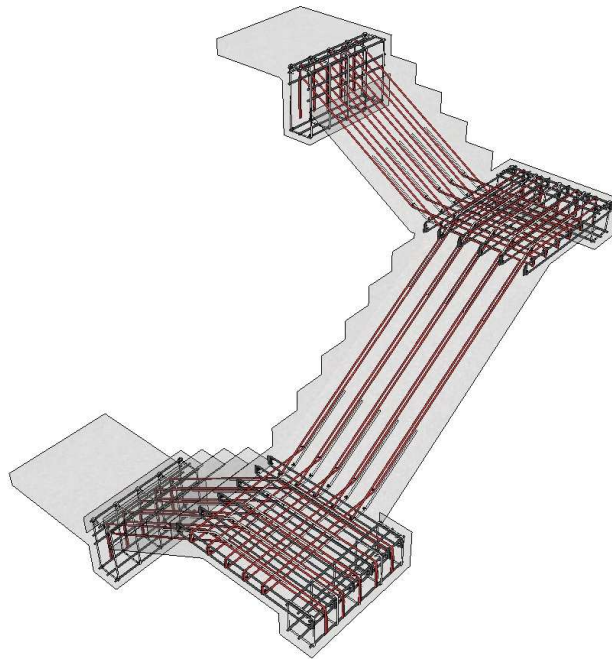
W: www.BiMUp.co.uk | **E:** info@BiMUp.co.uk

Bill of Quantities: Length and Weight - Reinforcement

Job Number: BiMUp Reporting

File in Use: BiMUp5D-Length-Weight-TypicalStaircase-Reinforcement_01

Document generated on: Tuesday, 16 Jun 2015, 11:39:42 time zone: GMT Summer Time



Description	Count	Bar Size (mm)	Weight (kg/m)	Length (m)	Length Total (m)	Length x Weight	Weight Total (kg)
Bar 01	5	10	0.62	2.79	13.96	1.72	8.61
Bar 02	5	10	0.62	2.76	13.80	1.70	8.52
Bar 03	10	10	0.62	1.20	12.00	0.74	7.40
Bar 04	5	10	0.62	4.03	20.16	2.49	12.44
Bar 05	5	10	0.62	3.96	19.81	2.44	12.22
Bar 06	5	10	0.62	1.20	6.00	0.74	3.70
Bar 07	5	10	0.62	1.15	5.75	0.71	3.55
Bar 08	5	10	0.62	2.60	13.02	1.61	8.03
Bar 09	5	10	0.62	2.73	13.67	1.69	8.43
Bar 10	12	10	0.62	1.22	14.67	0.75	9.05
Bar 10	12	10	0.62	1.22	14.67	0.75	9.05
Bar 11	10	8	0.40	1.51	15.06	0.59	5.95
Bar 12	10	8	0.40	1.01	10.05	0.40	3.97
Bar 13	31	12	0.89	0.85	26.35	0.75	23.40

Description	Count	Bar Size (mm)	Weight (kg/m)	Length (m)	Length Total (m)	Length x Weight	Weight Total (kg)
	----				----		----
Total	125				198.97		124.33